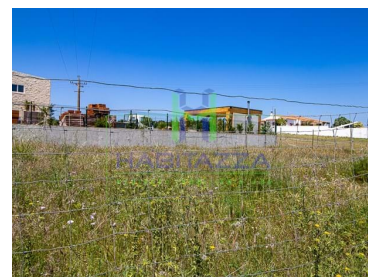
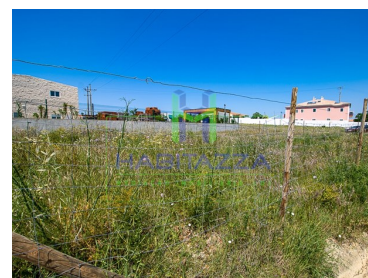




## Odiáxere - Land



Land Area (m<sup>2</sup>)

**135 000 €**  
(EUR €)

### Land of 400 sq.m for commercial building, in Odiáxere

Land of 400 sq.m, located in the parish of Odiáxere, intended for the construction of an industrial warehouse or a building for commercial purposes.

It is fenced, flat and clean of vegetation.

The land is sold with an architectural project for a warehouse with 348.70 sq.m of gross construction area, already approved by the City Hall of Lagos, and with a valid construction license to start the project at any time.

Are you looking for a place to initiate your business project? Maybe this is the ideal place to launch it.

Contact us for more information.



**Céline Mestre**

+351 961 404 524 <sup>2</sup> · +351 282 789 519 <sup>1</sup>

celine.mestre@habitazza.com

**T +351 282 789 519 <sup>1</sup> · T +351 961 404 524 <sup>2</sup> · E info@habitazza.com**

**Avenida Dom Sebastião Lote 129, Loja C, 8600-502 Lagos  
AMI 18288**

<sup>1</sup> (Call to national fixed network) | <sup>2</sup> (Call to national mobile network)



## Property Features

- Sealed land area



**Céline Mestre**

+351 961 404 524 <sup>2</sup> · +351 282 789 519 <sup>1</sup>

[celine.mestre@habitazza.com](mailto:celine.mestre@habitazza.com)

**T +351 282 789 519 <sup>1</sup> · T +351 961 404 524 <sup>2</sup> · E [info@habitazza.com](mailto:info@habitazza.com)**

**Avenida Dom Sebastião Lote 129, Loja C, 8600-502 Lagos  
AMI 18288**

<sup>1</sup> (Call to national fixed network) | <sup>2</sup> (Call to national mobile network)